



**Exhibition Services**

**展覽服務**

# Additional Booth Facilities

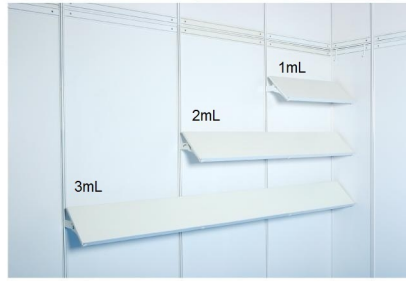


[www.hktdc.com](http://www.hktdc.com)





**FA007 1mL x 0.3D**  
**Wooden Display Shelf - Flat**  
 (1mL x 0.3mD, Max. Loading 3kg per metre)  
 平放式木層板 (1米長 x 0.3米深，  
 最大承重3公斤/每米計算)



**FA008 1mL x 0.3D**  
**Wooden Display Shelf - Slope** (1mL x 0.3mD,  
 Max. Loading 3kg per metre)  
 斜放式木層板 (1米長 x 0.3米深，  
 最大承重3公斤/每米計算)



**FA009**  
**Wooden Display Shelf with Structure**  
**Pole Mounted - Flat** (1mL x 0.5mD,  
 Max. Loading 10kg per metre)  
 平放式木層板 (1米長 x 0.5米深，  
 最大承重10公斤/每米計算)



**FA010**  
**Glass Display Shelf - Flat**  
 (1mL x 0.3mD, Max. Loading 2kg per metre)  
 平放玻璃層板 (1米長 x 0.3米深，  
 最大承重2公斤/每米計算)



**FA011**  
**Glass Display Shelf with Structure**  
**Pole Mounted - Flat**  
 (1mL x 0.5mD, Max. Loading 5kg per metre)  
 平放玻璃層板 (1米長 x 0.5米深，  
 最大承重5公斤/每米計算)



**FA013 / FA013A**  
**Cabinet with Sliding Doors**  
 (1mL x 0.5mW x 0.75mH / 1mH)  
 儲物櫃 (1米長 x 0.5米闊 x 0.75米高 / 1米高)



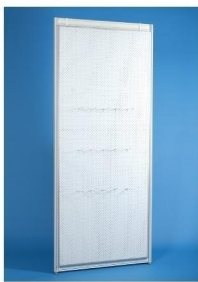
**FA014 / FA014A**  
**Table Showcase** (1mL x 0.5mD x 0.75mH / 1mH)  
 陳列飾櫃連 (1米長 x 0.5米闊 x 0.75米高 / 1米高)



**FA015**  
**Table Showcase Counter**  
 (1mL x 0.5mD x 1mH)  
 陳列飾櫃連三面側板 (腳擋)  
 (1米長 x 0.5米闊 x 1米高)



**FA017Y**  
**Tall Showcase -**  
 2 Layers of Glass Shelf, 2 x 7 Watt  
 LED Downlights (Yellow Light 2700-3000K)  
 (1mL x 0.5mD x 2.5mH)  
 高身陳列飾櫃連兩層玻璃層板及兩盞7瓦特  
 LED射燈 (黃光 2700-3000K) (1米闊 x 0.5米深 x 2.5米高)



**FA020**  
**Pegboard with 30 Hooks** (1mL x 2.5mH)  
 有孔陳列板連30個掛鉤 (1米闊 x 2.5米高)



**FA021**  
**Pegboard with 30 Hooks** (1mL x 1.75mH)  
 (Cabinet excluded)  
 有孔陳列板連30個掛鉤  
 (1米闊 x 1.75米高，不包括地櫃)



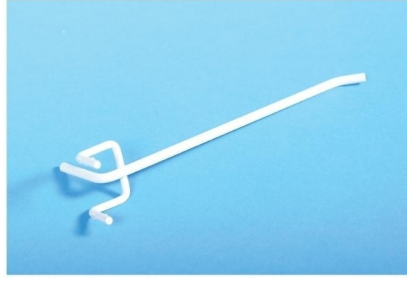
**FA022**  
**Pegboard with 30 Hooks** (0.5mL x 2.5mH)  
 有孔陳列板連30個掛鉤 (0.5米闊 x 2.5米高)

Facilities photo shown in EOP and brochure are for reference only, the facilities in each hall may look slightly different, the information is subject to change without prior notice.

所有“參展一站通”及“額外設施目錄”之設施相片只供參考，各展廳的設施外觀可能略有不同，如有任何改動恕不另行通知。



**FA022A**  
Pegboard with 30 Hooks (0.5mL x 1.75mH)  
有孔陳列板連30個掛鉤 (0.5米闊 x 1.75米高)



**FA023**  
Pegboard Hook (For FA020, 021, 022, 022A only)  
有孔陳列板掛鉤 (只供FA020, 021, 022, 022A 的  
有孔陳列板使用)



**FA024**  
Garment Hanging Rack (1mL)  
(Plastic Garment Hanger excluded)  
掛衣通 (1米長) (不包括衣架)



**FA025 A**  
Vertical Garment Hook x 1 on clothes rod (1 set)  
曲衣架連斜衣鉤一個



**FA025**  
Vertical Garment Hook  
斜衣鉤



**FA026**  
Square Meeting Table  
(0.7mL x 0.7mD x 0.75mH)  
會議桌 (正方檯) (0.7米長 x 0.7米闊 x 0.75米高)



**FA027**  
Rectangular Table (1mL x 0.5mD x 0.75mH)  
諮詢檯 (長方檯) (1米長 x 0.5米闊 x 0.75米高)



**FA028/ FA028A**  
Information Counter (1mL x 0.5mD x 0.75mH/1mH)  
諮詢檯連三面側板 (腳擋)  
(1米長 x 0.5米闊 x 0.75米高/1米高)



**FA029**  
Black Leather Chair  
黑色皮椅



**FA030**  
Black Bar Stool (adjustable height)  
吧椅



**FA031**  
White Folding Door (1mL x 2mH)  
摺門 (1米闊 x 2米高)



**FA032**  
Wooden Swinging Door (1mL x 2mH)  
掩門 (1米闊 x 2米高)



**FA033**  
Smoked Glass Swinging Door (1mL x 2mH)  
玻璃門 (1米闊 x 2米高)

Facilities photo shown in EOP and brochure are for reference only, the facilities in each hall may look slightly different, the information is subject to change without prior notice.

所有“參展一站通”及“額外設施目錄”之設施相片只供參考，各展廳的設施外觀可能略有不同，如有任何改動恕不另行通知。





**FA034**  
Partition Panel (0.5mL x 2.5mH)  
間格用半米圍板 (0.5米闊 x 2.5米高)



**FA035**  
Partition Panel (1mL x 2.5mH)  
間格用一米圍板 (1米闊 x 2.5米高)



**FA036**  
Acrylic Panel (0.5mL x 2.5mH)  
透明膠片 (0.5米闊 x 2.5米高)



**FA037**  
Acrylic Panel (1mL x 2.5mH)  
透明膠片 (1米闊 x 2.5米高)



**FA038**  
Smoked Acrylic Panel (0.5mL x 2.5mH)  
磨砂膠片 (0.5米闊 x 2.5米高)



**FA039**  
Smoked Acrylic Panel (1mL x 2.5mH)  
磨砂膠片 (1米闊 x 2.5米高)



**FA040**  
Ceiling Beam (1mL x 70mmH)  
天花橫樑 (1米長 x 70毫米高)



**FA041**  
Ceiling Beam (1mL x 175mmH)  
天花橫樑 (1米長 x 175毫米高)



**FA042**  
Ceiling Grid per Square Metre (With metal mesh on top), 175mmH  
天花格(每平方米)(175毫米高) (連網格)



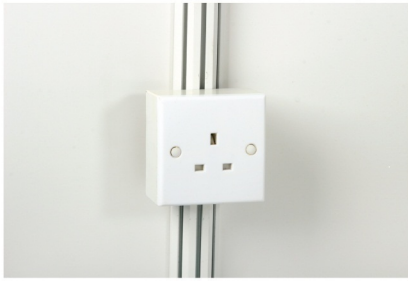
**FA044**  
Pentagonal Display Platform (0.75mH)  
五方展示台 (0.75米高)



**FA047**  
Round Table  
(700mm Diameter x 725mm Height)  
圓桌 (700mm直徑 x 725mm高)



**FA051**  
Clothes Rod with 4 Hooks (1mL)  
曲衣架連4隻掛衣鉤(1米長)

**LG006/LG026/LG027 /LG028**

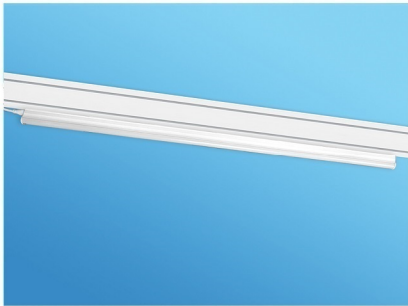
500/1000/2000/2860 Watt Square Pin Power Socket (220V) for One Electrical Appliance only (Not permitted for Lighting connection)  
 只供一件電器用 500/1000/2000/2860 瓦特電源方腳插座 (220伏特) (不可用於照明裝置)

**LG081**

13 Watt LED Spotlight (Yellow Light 2700-3000K)  
 13瓦特 LED短臂射燈 (黃光2700-3000K)

**LG082**

13 Watt LED Long Armed Spotlight (300mm) (Yellow Light 2700-3000K)  
 13瓦特 LED長臂射燈 (黃光2700-3000K)

**LG014A**

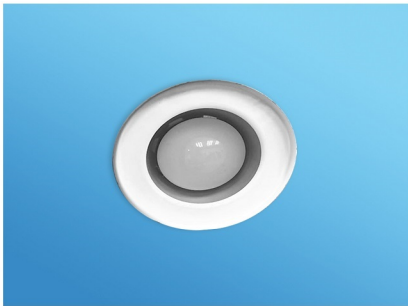
LED Fluorescent Tube (1200mmL) (White Light 6500K)  
 LED光管 (1200mm長) (白光6500K)

**LG015Y**

7 Watt LED Tracklight on 1 Metre Track (Yellow Light 2700-3000K)  
 7瓦特LED路軌燈 (黃光2700-3000K) 連一米長路軌

**LG016Y**

7 Watt LED Downlight for Tall Showcase FA017 (Yellow Light 2700-3000K)  
 供FA017高身陳列飾櫃專用之7瓦特LED射燈 (黃光2700-3000K)

**LG021A**

13 Watt LED Recess Downlight for Tall Showcase  
 供FA017高身陳列飾櫃專用之13瓦特LED隱藏式射燈

**LG022/LG023**

Halogen Floodlight 300/500 Watt, Adjustable Angle (Yellow Light 2700-3000K)  
 鹵素泛光燈，俗稱「小太陽」(300/500瓦特) (黃光2700-3000K)

**LG024**

HQI Floodlight 250 Watt, Adjustable Angle (White Light 4200K)  
 HQI白光燈 (250瓦特) (白光4200K)

**LG025**

HQI Floodlight 70 Watt (White Light 4200K) (Inside Tall Showcase (FA017))  
 HQI白光燈 (70瓦特) (白光4200K)  
 (供FA017高身陳列飾櫃照明用)

Facilities photo shown in EOP and brochure are for reference only, the facilities in each hall may look slightly different, the information is subject to change without prior notice.

所有“參展一站通”及“額外設施目錄”之設施相片只供參考，各展廳的設施外觀可能略有不同，如有任何改動恕不另行通知。





**MS001**  
Bust with stand - Male Body, Black Colour  
半身模特兒連企座 - 男身，黑色



**MS002**  
Bust with stand - Female Body, Black Colour  
半身模特兒連企座 - 女身，黑色



**MS003**  
Plastic Garment Hanger (10 Pieces) -  
Black Colour  
塑膠製衣架 (每十個計) - 黑色



**MS005**  
Movable Mirror  
活動全身鏡



**MS006**  
Movable Garment Hanging Rack (1215-1830mmL x 460mmW x 1130-1850 mmH)  
活動掛衣通 (1215-1830毫米長 x 460毫米闊 x (1130-1850)毫米高)



**PL001A**  
Potted Plant -  
Chrysalidocarpus (approx. 1mH)  
盆栽 - 散尾葵 (約1米高)  
*(photo for reference only) (相片僅供參考)*



**PL001B**  
Potted Plant - Schefflera  
(Gold Capella) (approx. 1mH)  
盆栽 - 傘樹 (約1米高)  
*(photo for reference only) (相片僅供參考)*



**PL001C**  
Potted Plant -  
Boston Fern (approx. 0.3mH)  
盆栽 - 波士頓芒 (約0.3米高)  
*(photo for reference only) (相片僅供參考)*



**PL001D**  
Potted Plant -  
Codiaeum Tree (approx. 0.6mH)  
盆栽 - 濕金 (約0.6米高)  
*(photo for reference only) (相片僅供參考)*

Facilities photo shown in EOP and brochure are for reference only, the facilities in each hall may look slightly different, the information is subject to change without prior notice.

所有“參展一站通”及“額外設施目錄”之設施相片只供參考，各展廳的設施外觀可能略有不同，如有任何改動恕不另行通知。

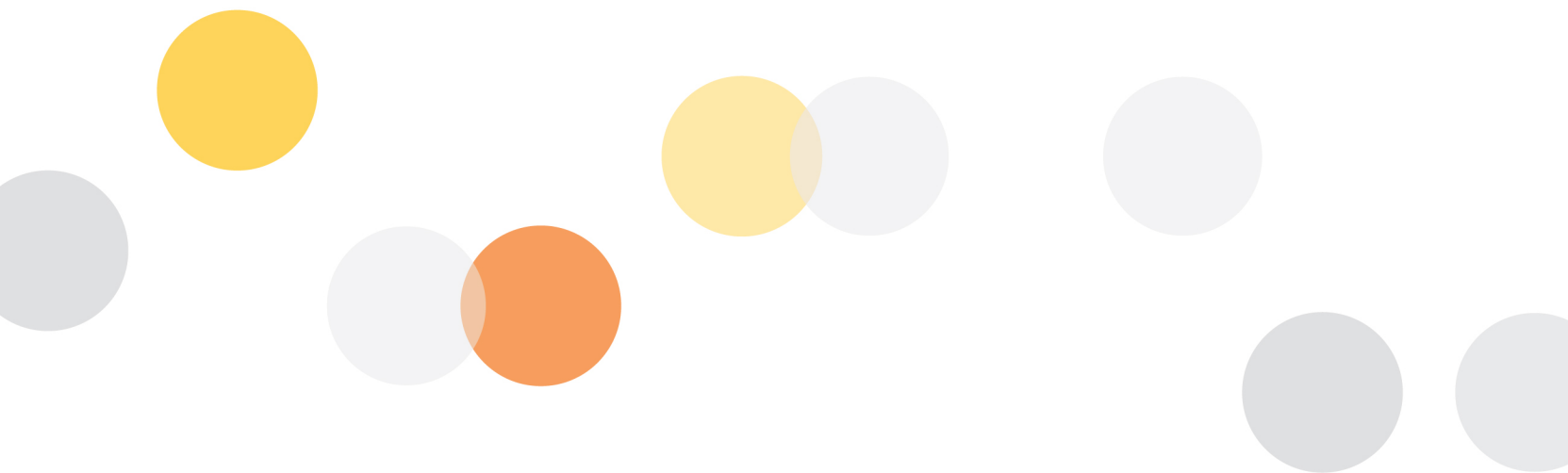


**Additional Booth Facilities 額外攤位設備**

The Hong Kong Trade Development Council reserves the right to change configuration of booth and services/equipment providing if necessary. 如有需要，香港貿發局有權更改有關攤位結構及設施/服務供應。



**PL002**  
Fresh Flower Arrangement (approx. 0.3mH)  
鮮花擺設 (約0.3米高)  
*(photo for reference only) (相片僅供參考)*



香港貿易發展局

Hong Kong Trade Development Council 香港貿易發展局  
83 Chun Yat Street, Tseung Kwan O Industrial Estate,  
Tseung Kwan O, Kowloon, Hong Kong  
香港九龍將軍澳將軍澳工業村駿日街83號  
Tel: (852) 2240 5499 Fax: (852) 3521 0450

[www.hktdc.com](http://www.hktdc.com)

